

Political Ecology and Climate Change Research: A Case Study of Unburnable Carbon



Tracey Osborne
School of Geography and Development

April 27, 2016

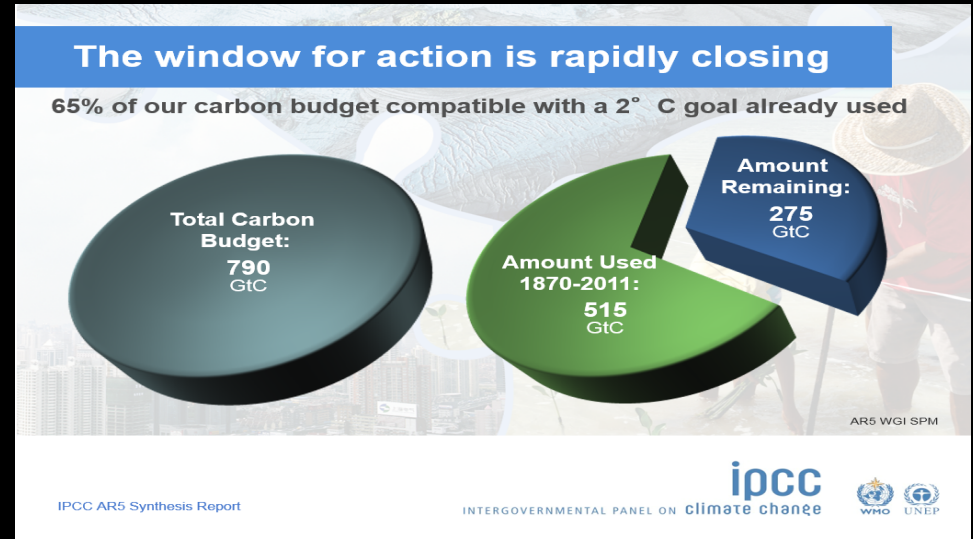
Political ecology

Empirical research seeking to understand linkages in the condition and change of social/environmental systems, with explicit consideration of power relations (Robbins, 2005:12)

- (1) *Focuses on the causes rather than the symptoms of environmental problems*
- (2) *Stresses that ecological systems are political, and our understandings of these systems are mediated by political and economic processes*
- (3) *Normative: Recognizes that “there are very likely better, less coercive, less exploitative, and more sustainable ways of doing things” (Robbins 2005: p.12).*

Climate Alliance Mapping Project

- Carbon budget: we have used over 65% based on 2 degree C target




- Map layers
 - Fossil fuel reserves
 - Protected areas
 - Indigenous territory
 - Digital stories




Climate Alliance Mapping Project


Amazonian Basin


Priority Zones


 Indigenous territory

 Conservation areas

Fossil Fuels

 Fossil fuel reserves

 Proposed development

 Existing development

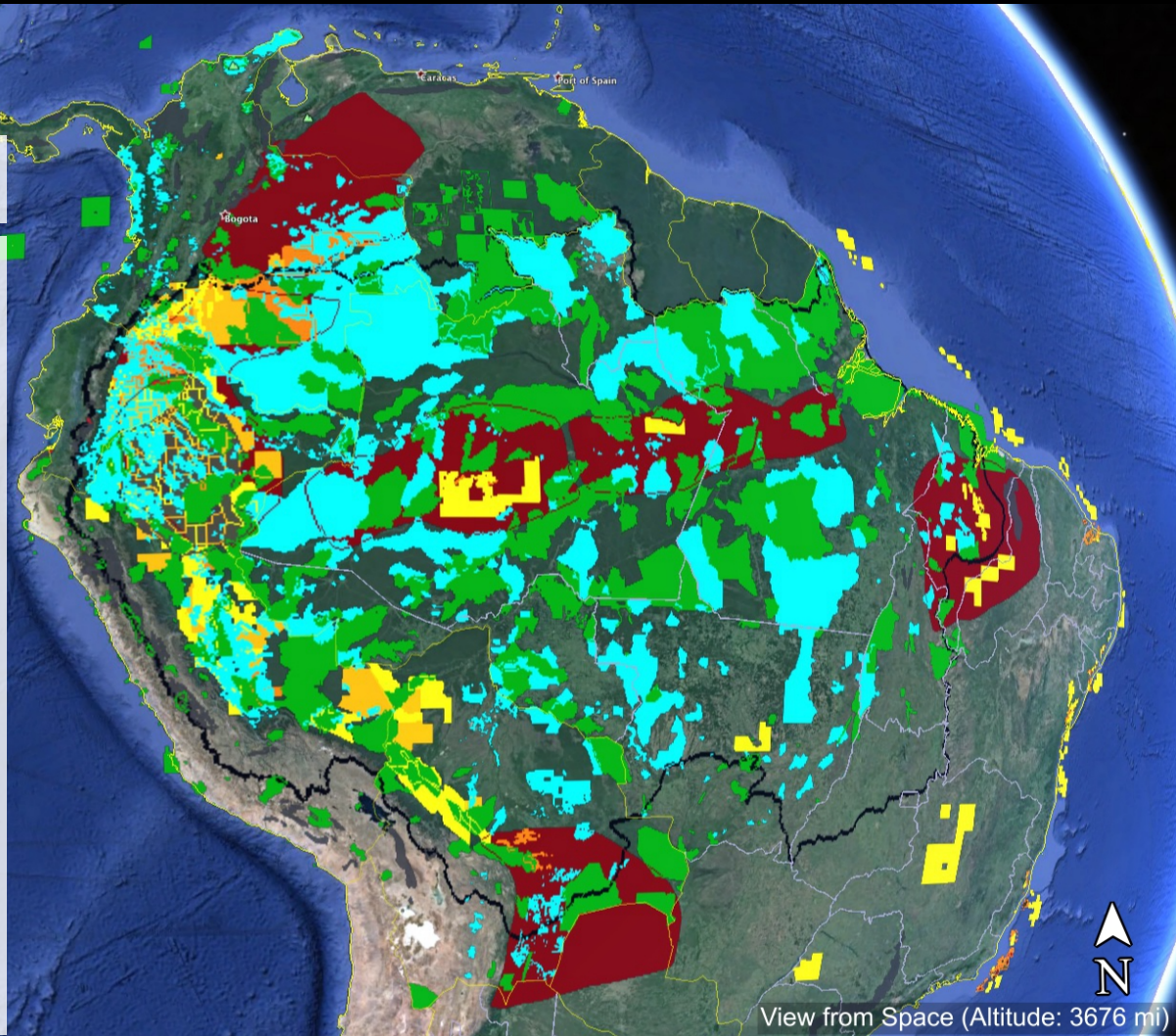
Google earth

Data SIO, NOAA, U.S. Navy, NGA, GEBCO

US Dept of State Geographer

© 2015 Google

Image Landsat



View from Space (Altitude: 3676 mi)

Funding support



Tracey Osborne

tosborne@email.arizona.edu

Public Political Ecology Lab

<http://ppel.arizona.edu/>

Climate Alliance Mapping Project Team

Faculty (University of Arizona)

- **Tracey Osborne**, School of Geography and Development
- **Jamie A. Lee**, School of Information and Library Sciences
- **Ben Colombi**, American Indian Studies

Graduate Students (School of Geography and Development)

- **Remy Franklin**, Website development & Media
- **Stina Janssen**, Research
- **Megan Mills-Novoa**, Mapping